

## Wing Band for Activity & Body Temperature Monitoring of Poultry

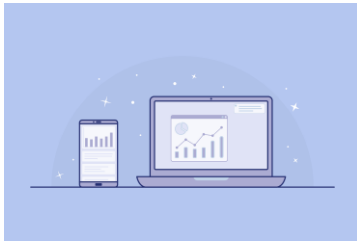
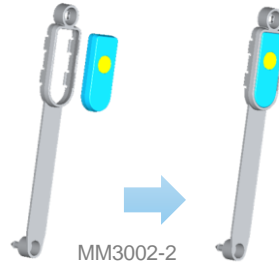
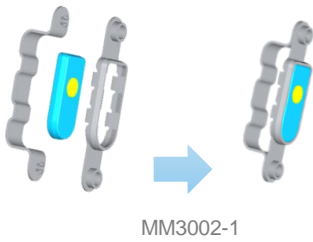
- Turnkey solution with early detection algorithm for illness
- Small form factor and light weight reducing the discomfort level of the animal due to wearing the sensor
- Easy monitoring and operation with smartphone app or Cloud



### Care for Poultry:

MM3002 can detect serious illness by monitoring and tracking changes in body temperature, activity, and sleep level of the animal. In addition, the MM3002 allows taking early action on behavioral issues or common conditions such as anxiety, stress or boredom.

Optional bracket:



With Timeline feature for Body temperature & activity log, the MM3002 becomes a real automated health monitoring tool in Poultry farms. In addition, the Timeline provides a simple and comprehensive overview of the animal sleep behavior and other types of movements to preventively detect health problems.

## FEATURES

- Records the value of body temperature and activity level and alerts when measured data is abnormal
- 5 Levels of activity: Level 1&2: Below normal, Level 3: Normal, Level 4&5: Above normal
- Form Factor & ordering information:
  - Type 1: MM3002-1, Non-invasive
  - Type 2: MM3002-2, Invasive (The needle at the bottom of the bracket pierce thru animal skin)
  - Type 3: MM3002-3, Foot ring (Please contact mCube for availability of this type)

## MM3002 (ear tag) TECHNICAL DETAILS

<b>Size</b>	Base body: 30.5x11x5mm
	Bracket: 130*11*5mm (Invasive type)/ 65x13x15mm (Non-invasive tpe)
<b>Weight</b>	9g
<b>Wireless Connectivity</b>	BLE
<b>Battery</b>	1 SR726 coin cell battery (2-month battery life)
<b>Battery required</b>	Yes (included)
<b>Body temperature precision</b>	±0.2°C
<b>Detectable behaviors</b>	Lie down, stand up, step count, activity level
<b>Alert mechanism</b>	Activity > 10% of normal & Temperature > 0.5°C of normal
<b>Frequency of data transmission to gateway</b>	Once a day
<b>Data storage</b>	7 days (average temperature & activity level)
<b>Product protection grade</b>	IP65
<b>Operating temperature</b>	-30 ~+55°C

## SIMPLIFIED SYSTEM DIAGRAM

